



<http://www.flexcapacitor.com>
<http://www.drumbeatinsight.com>

The Draggable Label allows you to add fine grained and sophisticated control to the components in your Flex application. The Draggable Label increments or decrements the values in your components, adds keyboard support to increment and decrement the value and adds mouse wheel support to your components. Among other benefits the Draggable Label makes your application more user friendly to your users. Even if you do not use these features you can use on the Draggable Label in place of a traditional Label component to set focus on the target component.

If any steps or information is missing please contact us at the site above.

Requirements

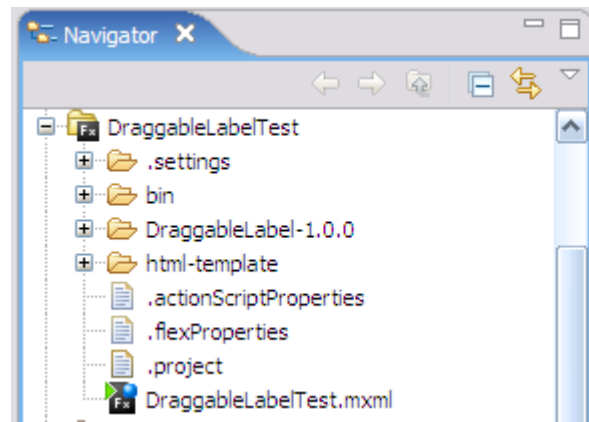
Flex Builder 2.0.1 Hotfix 2 or Flex SDK 2.0.1 Hotfix 2

Installation

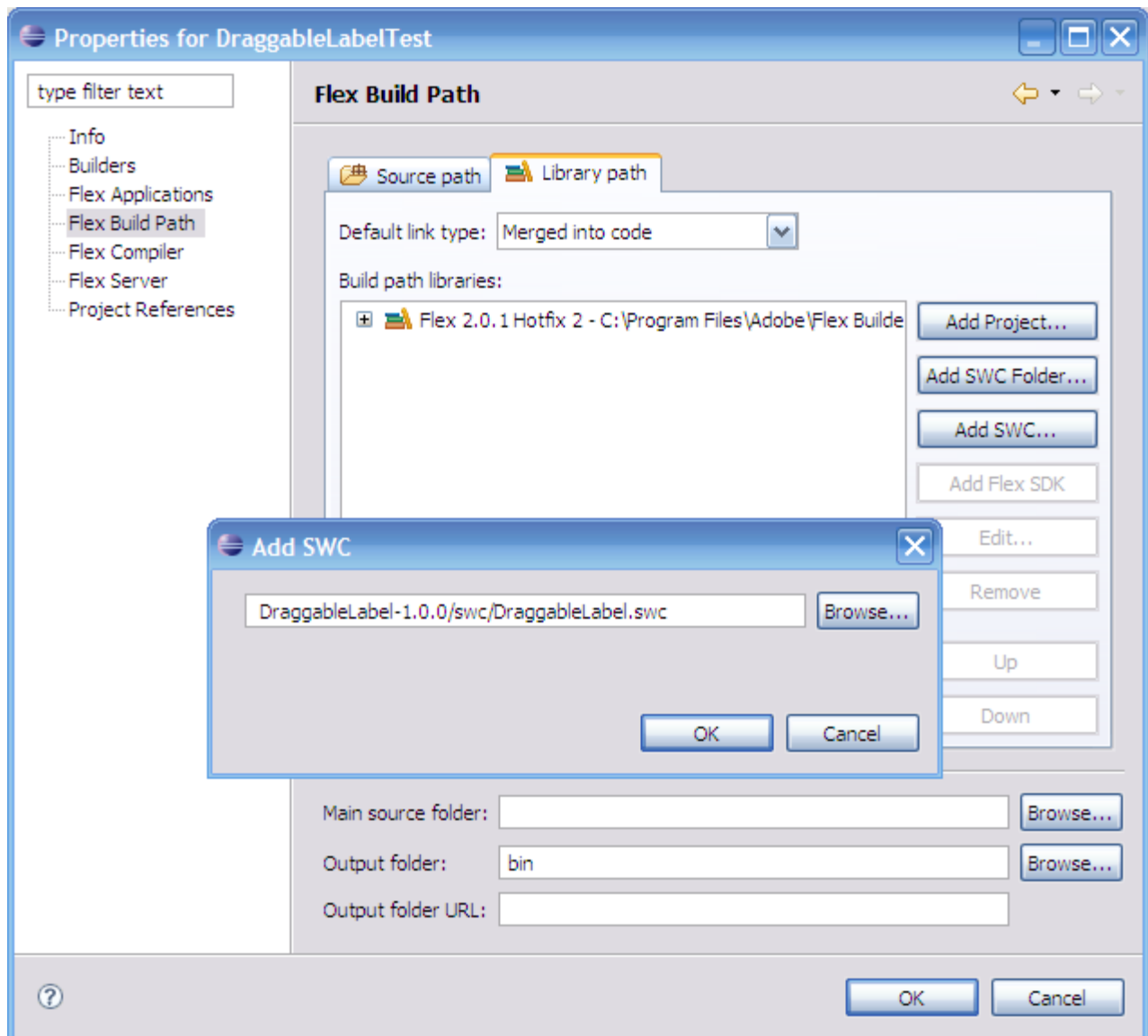
Please follow the next to steps to make the Draggable Label work in your project.

In Flex Builder:

1. Unzip the download to your project directory.



2. Open the project properties by right clicking on your project and clicking properties.
3. Goto Flex Build Path > Library Path tab and click "Add SWC".
In the dialog add the path directly to the DraggableLabel.swc file. It will look like, "DraggableLabel-1.0.0/swc/DraggableLabel.swc".



NOTE: If you have the source code you do not need to add this component to your project.

4. Close out the dialogs.
5. Copy the files in the examples directory to the root of your project. Run the examples.
6. Read the rest of this document. 2 more minutes.

Usage

To use the DraggableLabel component drag the component onto the stage. Set the size and location according to your needs and assign it to any component on the stage.

Using Flex Builder add the Draggable Label to the stage. Also drag a TextInput to the stage. Set the id of the TextInput in the target property. Add any minimum or maximum values if necessary and any other attributes and you are set to go.

```
<fc:DraggableLabel text="Age" target="{age}"/>
```

```
<mx:TextInput id="age"/>
```

Full MXML Code:

```
<?xml version="1.0" encoding="utf-8"?>
<mx:Application xmlns:mx="http://www.adobe.com/2006/mxml" layout="absolute"
  xmlns:fc="com.flexcapacitor.controls.*">
  <mx:HBox x="20" y="20">
    <fc:DraggableLabel text="Age" target="{age}" width="100%"
textAlign="right" focusOnMouseUp="true" addKeyBehavior="true"
addScrollBehavior="true"/>
    <mx:TextInput id="age"/>
  </mx:HBox>
</mx:Application>
```

See LabelInApplication.mxml and DraggableLabel.mxml for working examples.

Features

The Draggable Label component has many features to make your life easier. You can treat the Draggable Label component as you would any other UIComponent.

Features:

- Target any UIComponent
- Target any Property
- Set drag orientation to horizontal or vertical
- Set minimum and maximum values
- Set focus on target component when label is clicked

- Add Mouse Wheel Scroll behavior to your target component
- Add Keyboard up and down arrow behavior to your target component
- Set the step size of the increment
- Set the gap size between increments
- Set the fixed point
- Set the drag icon
- Set the over icon
- Works with Combobox, List, DataGrid, ColorField, TextInput, Stepper, Slider, etc
- Disable drag behavior completely and use any of the other features

Properties, Methods and Events

For api documentation open the index.html page in the help directory of the unzipped folder.

For more information visit <http://www.drumbeatinsight.com>

Copyright 2000+ Drumbeat Insight.